



# ChainShade. 3000

Roller Blind



## **ChainShade. 3000** offers effective and functional shading for your environment.

This manual chain-operated roller blind system features a geared chain mechanism, making it easy to raise and lower the blind.

You can install the blind using universal steel brackets for face-fixing or top-fixing. With an aluminium backbar between the brackets, the blind can be attached to suspended ceilings.

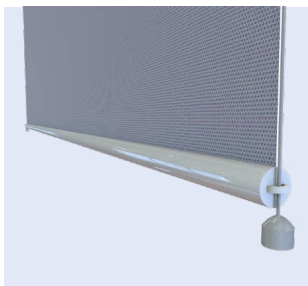
This system meets child safety standards as the chain can be equipped with a safety clip.

Our range of fire-retardant blinds fabrics are designed for this blind system and ensures ChainShade. is suitable for all commercial environments.

The blind can cover widths up to 3000mm and heights up to 4000mm, with a maximum surface area of 12m<sup>2</sup> supported by a 20-80mm diameter extruded aluminium barrel, depending on the blind weight. For larger surface areas, consider our CrankShade. 4000 and ElectroShade. 5000 blind systems for the perfect shading solution.

This blind system is available in crank handle or electric operation using our **CrankShade. 4000** and **ElectroShade. 5000** systems.

# Specifications



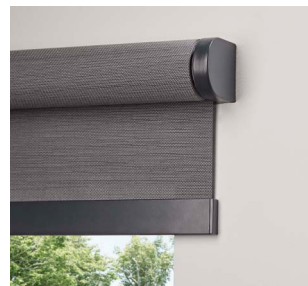
Side guide wires and side trackers available



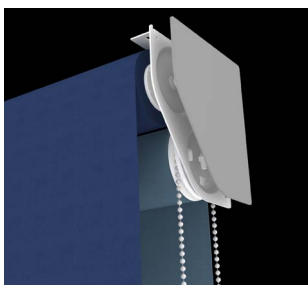
Suitable for door vision panels



Bracket and fixing covers available



Bespoke RAL colour powder coating available for all hardware



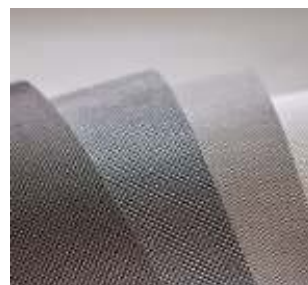
Dual system with double brackets available



**Bottom bar options:** round aluminium and fabric enclosed - bespoke options upon request.



**Blind concealment:** Aluminium fascia, cassette, blind box



**Fabric options:** Swanmac 4 core ranges and 100's of fabrics from our supply partners

For more systems  
info and automation options visit:

[www.swanmac.co.uk/products/roller-blinds](http://www.swanmac.co.uk/products/roller-blinds)

## Key Features:



Heavy duty commercial-grade system



Gear control mechanism for ease of operation



Extended warranty certificates



Max width 3000mm



Max drop 4000mm



Crank & electric control options available for larger sizes



Swanmac ● Ltd

# Shading managed through teamwork

[www.swanmac.co.uk](http://www.swanmac.co.uk)

[sales@swanmac.com](mailto:sales@swanmac.com)

View our latest **Case Studies** using **ChainShade. 3000**

Click on the links below to find out more about our most recent installations.



[>](#)  
Consort Place West  
Tower, London



[>](#)  
Manchester  
Metropolitan  
University



[>](#)  
HMRC Cardiff



[>](#)  
SLC HQ, Glasgow